

The Certified Local Government Program

Prepared by Chris Skelly, Director of Local Govt Programs, Massachusetts Historical Commission.
Comments, suggestions and questions can be sent to
christopher.skelly@state.ma.us

December 11, 2020

The Certified Local Government Program

The Certified Local Government program recognizes that it is local governments that serve the primary role in historic preservation. Established in 1986, the CLG program was developed by the National Park Service as a partnership that provides for a close integration of federal, state, and local historic preservation activities. It is recognition that a community's municipal historic preservation program meets certain state and federal standards. In Massachusetts, the CLG program is administered by the Massachusetts Historical Commission.

The Benefits of Being a Certified Local Government

Certification is formal recognition by the state and federal government of an active, local preservation program. The financial benefit is that Certified Local Governments are eligible to compete for at least 10 percent of the federal historic preservation funds annually allocated to the Massachusetts Historical Commission by the National Park Service. The funds can be used for eligible historic preservation projects through the annual Survey and Planning grant program. More information on the Survey and Planning grant program is on the reverse side. CLGs participate directly in the review and approval of nominations to the National Register of Historic Places.



A municipality must have a local historic district established through a local bylaw or ordinance to become a CLG. A National Register District does not meet this requirement.

The Requirements to Become a Certified Local Government

Several requirements must be met to be approved as a Certified Local Government. The municipality must have a local historic district bylaw or ordinance, a qualified historic preservation commission, an ongoing program to identify historic resources and provisions for public participation in local historic preservation activities.



The Fairfield Avenue Local Historic District in Holyoke was established by the Holyoke City Council in 2007. Holyoke became a CLG in 2014.

The Process to Become a Certified Local Government

If a local commission is interested in becoming a CLG, they can contact the MHC to discuss their eligibility. If the minimum requirements are met, the local commission submits an application, with the signature of the local elected official, to the Massachusetts Historical Commission. If found eligible, the local commission is notified and a certification agreement is signed by the municipality and the MHC. The agreement is sent to NPS and if the NPS concurs with the MHC that the municipality meets the qualifications to become a CLG, they are notified by the NPS.

CLGs in MA

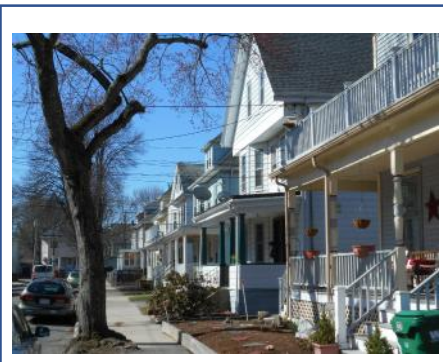
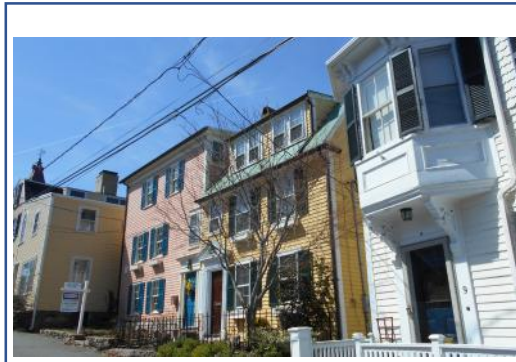
1. Bedford
2. Boston
3. Brookline
4. Danvers
5. Dedham
6. Eastham
7. Easton
8. Falmouth
9. Framingham
10. Gloucester
11. Grafton
12. Hingham
13. Holyoke
14. Lexington
15. Lowell
16. Marblehead
17. Medfield
18. Medford
19. Methuen
20. New Bedford
21. Newton
22. Plymouth
23. Quincy
24. Salem
25. Somerville
26. Worcester

Survey and Planning Grants

Survey and Planning Grants provide local communities in Massachusetts funding to prepare Cultural Resource Inventories, National Register Nominations, Community Wide Preservation Plans and other types of studies, reports, publications and projects that relate to the identification and protection of significant historic properties and sites. The Survey and Planning grant program is a 50/50 reimbursement match. The local community must provide 100% of the total cost of the project upfront.

As part of the Survey and Planning grant program, Certified Local Governments are eligible to compete for at least 10 percent of the federal historic preservation funds annually allocated to the Massachusetts Historical Commission by the National Park Service.

During years when funds are available, Survey and Planning Grants are available to CLGs and Non-CLGs. However, some years, Survey and Planning Grants are available only to CLGs. Even as a CLG, Survey and Planning Grants remain competitive, based on the other CLG grant applications received that year.



As CLGs, Marblehead, Medford, Methuen and Salem are a few of the communities that have utilized Survey and Planning Grants.



Maintaining CLG Status

To maintain CLG status, the CLG submits an annual report that describes the activities of the CLG over the past fiscal year. The outline of what must be included in the annual report is included in the MA CLG State Procedures. MHC administers a triennial evaluation to review whether the CLG continues to meet the qualifications for certification.

More detailed information concerning specific certification requirements, CLG responsibilities, and the CLG application are contained in the Guidelines for Implementation of Certified Local Government Programs in Massachusetts available from the Massachusetts Historical Commission.